

# FirstNet Data from National RFP



This PowerPoint was prepared by KSP using funds under award from the National Telecommunications and Information Administration (NTIA), U.S. Department of Commerce (DOC). The statements, findings, conclusions, and recommendations are those of the author(s) and do not necessarily reflect the views of the NTIA, DOC, or FirstNet

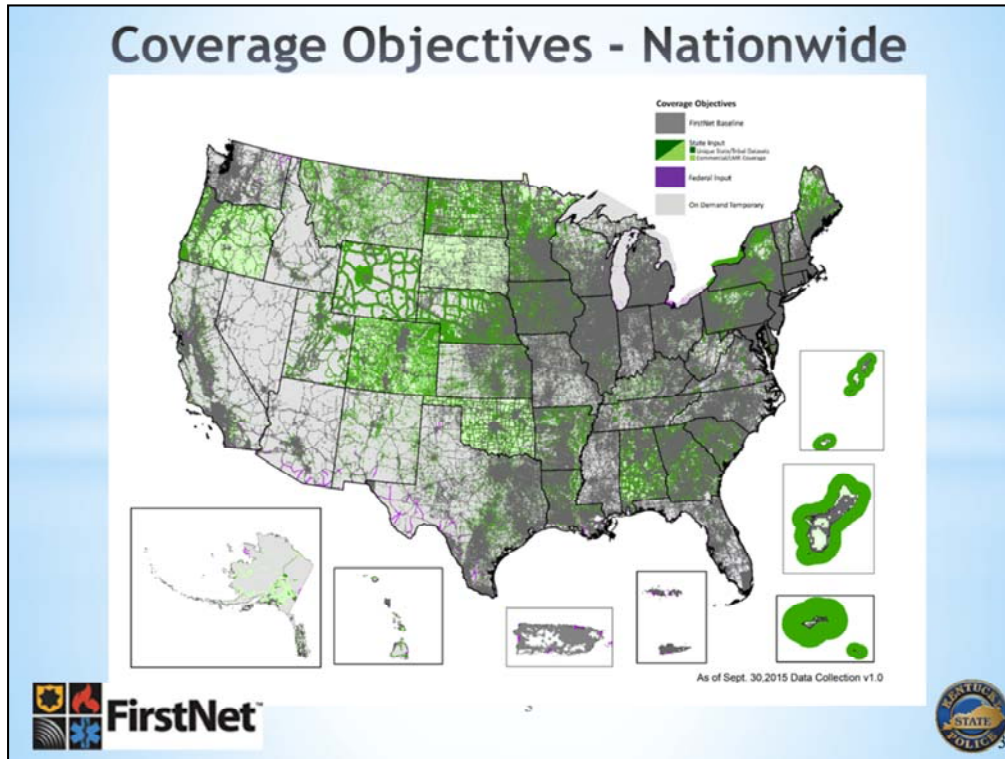
## Contents:

---

- **National Coverage Objectives**
- **State Coverage Objectives**

**\*\* Please review the notes located in the "notes" section of each slide .**





Slide 3: Nationwide coverage objectives that were included with the FirstNet RFP.

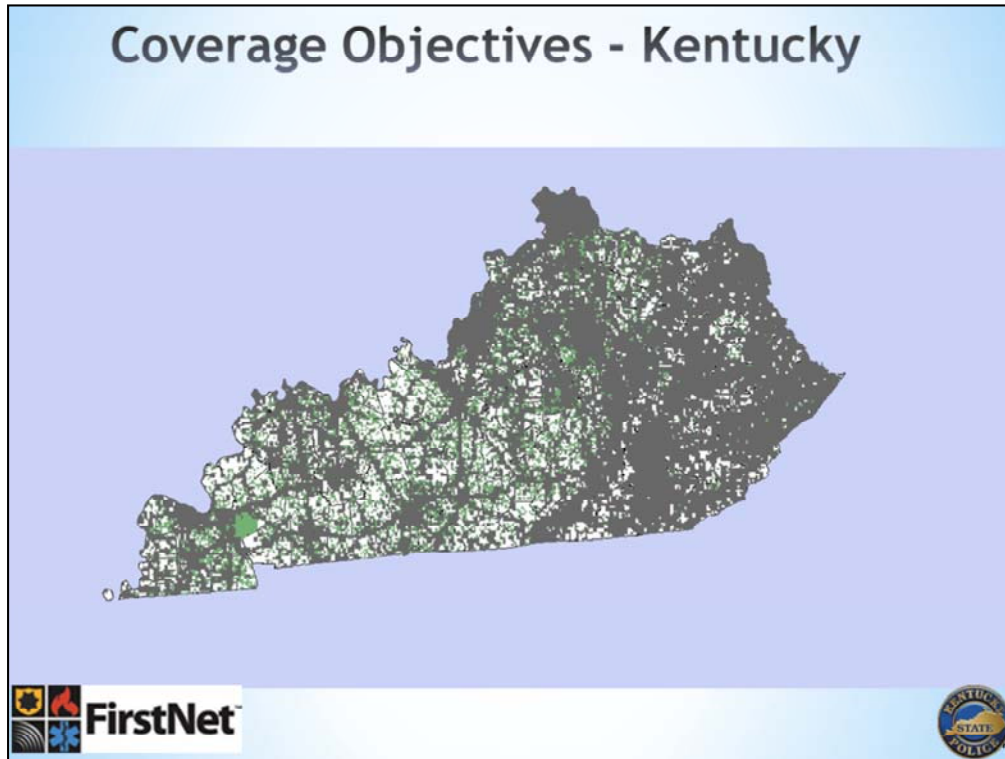
Legend:

**Dark Gray** – FirstNet Baseline Coverage

**Green** – State Input (either additional desired NPSBN coverage (dark green), or commercial coverage (light green))

**Purple** – Input from Federal agencies

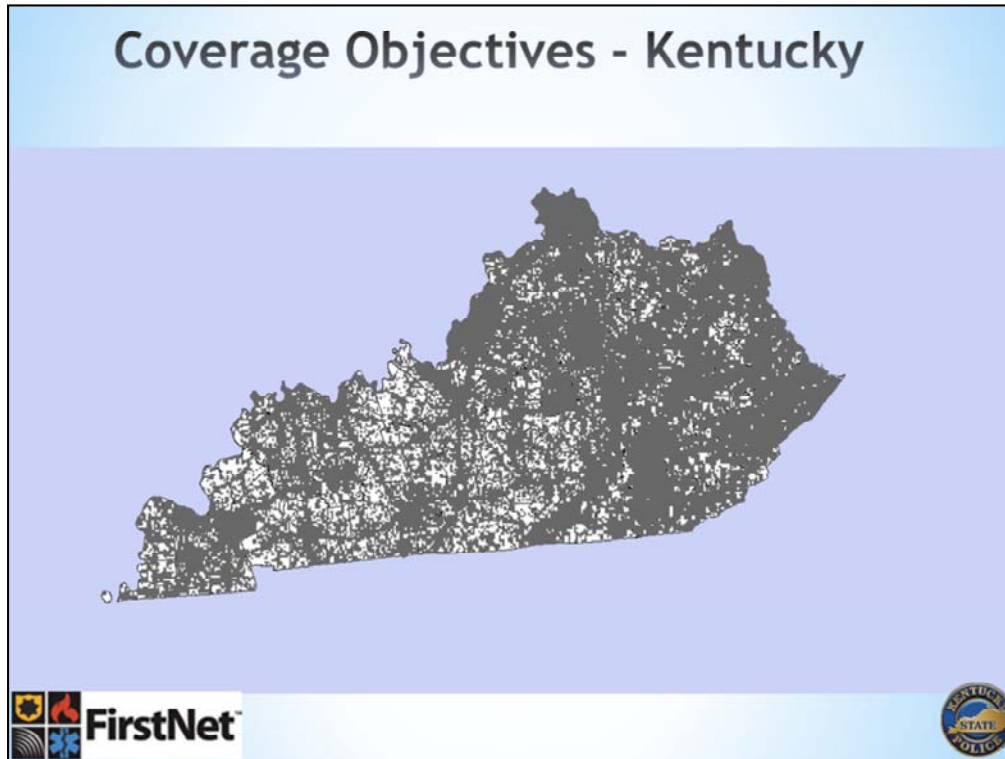
**Light Gray** – Areas targeted for “on-demand coverage”



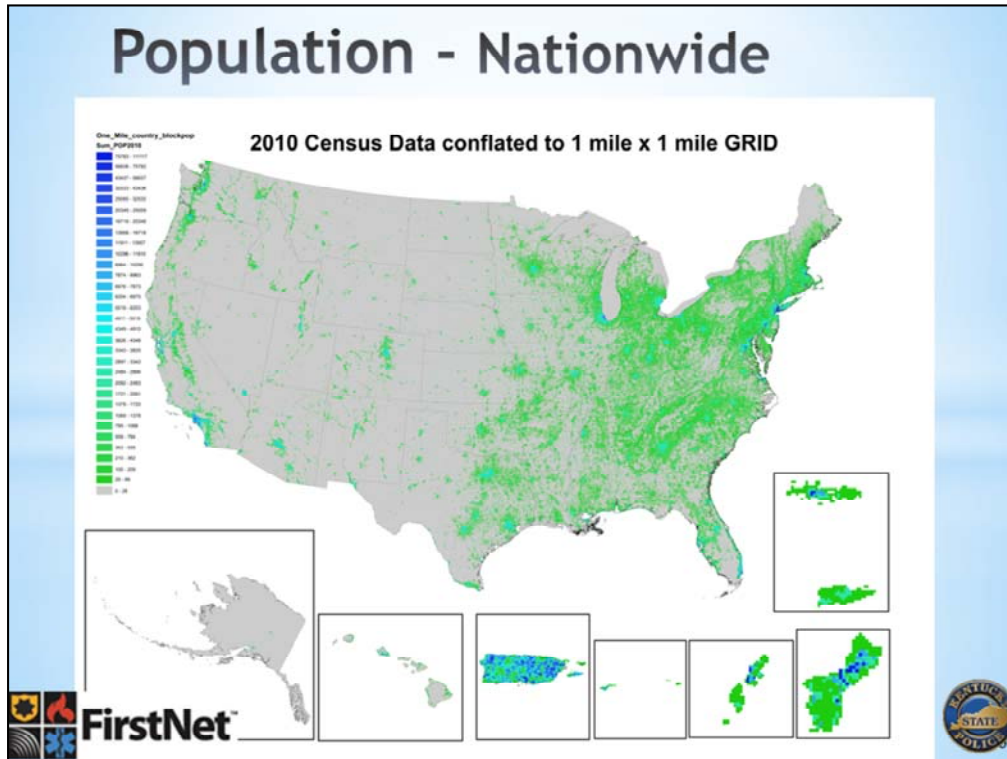
Slide 4: Commonwealth Coverage Objectives -- Provided to FirstNet and included in the RFP:

**Dark Gray** = FirstNet Baseline Coverage

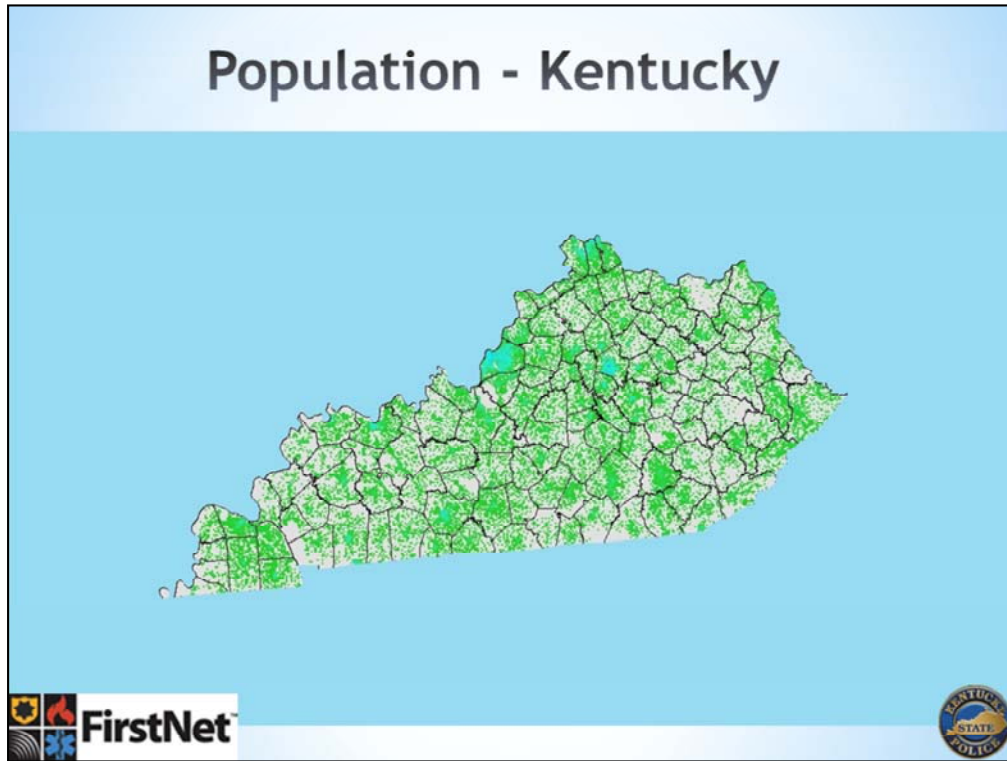
**Green** = Specific input by the Commonwealth



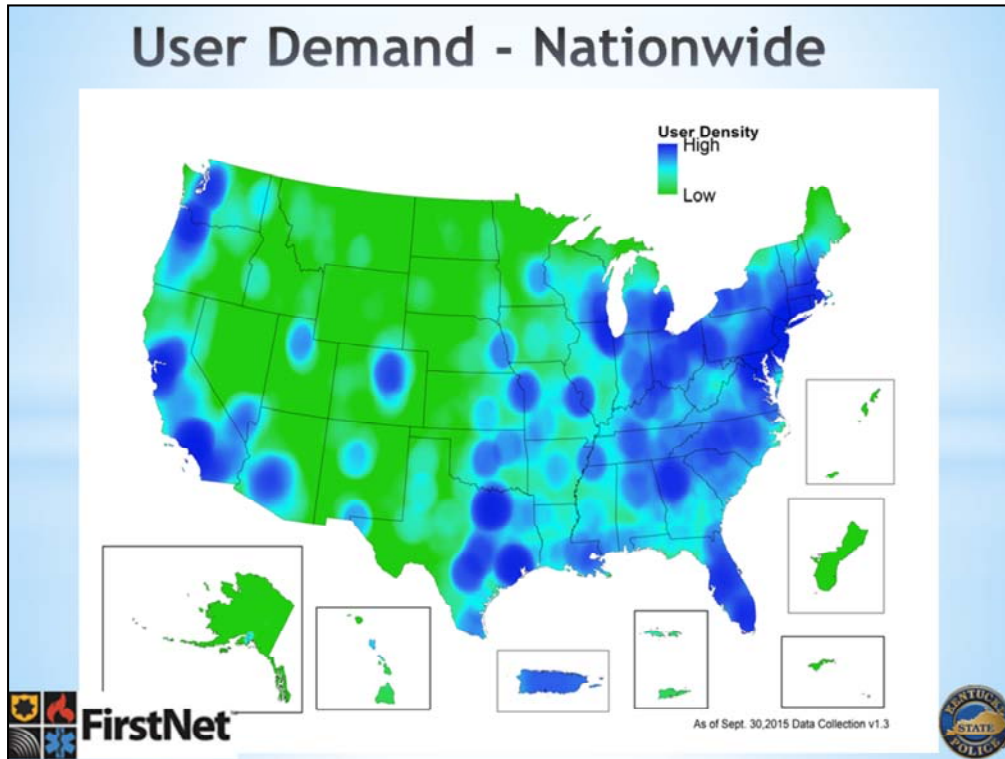
Slide 5: Commonwealth combined coverage objectives including \*FirstNet Baseline Coverage and \*Input by the Commonwealth (all as Gray)



Slide 6: A nationwide view of the population density.

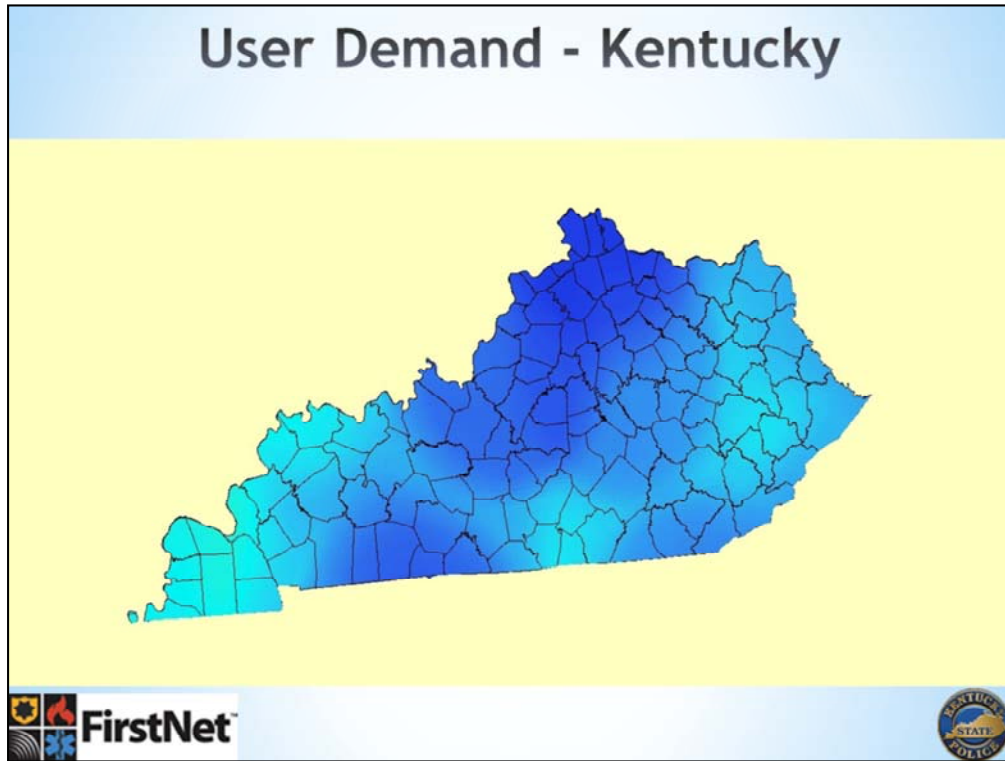


Slide 7: A view of the population density within the Commonwealth

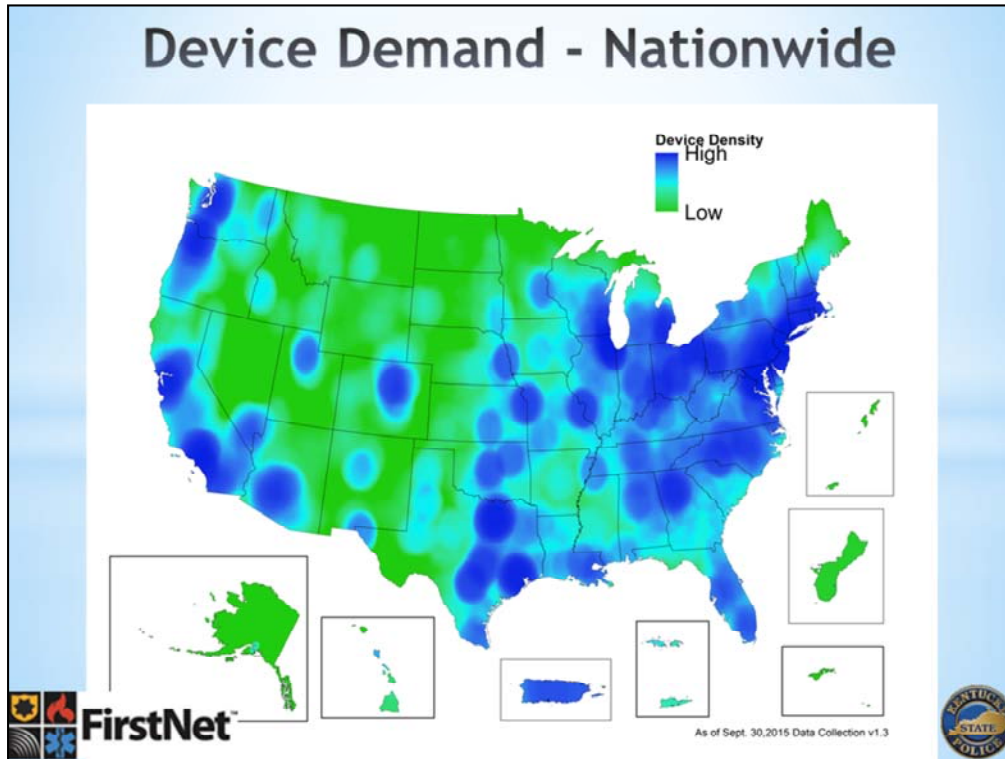


Slide 8: A nationwide view of user demand / user density -- Map based on input from states, territories, tribal nations, and federal agencies, with FirstNet estimates.

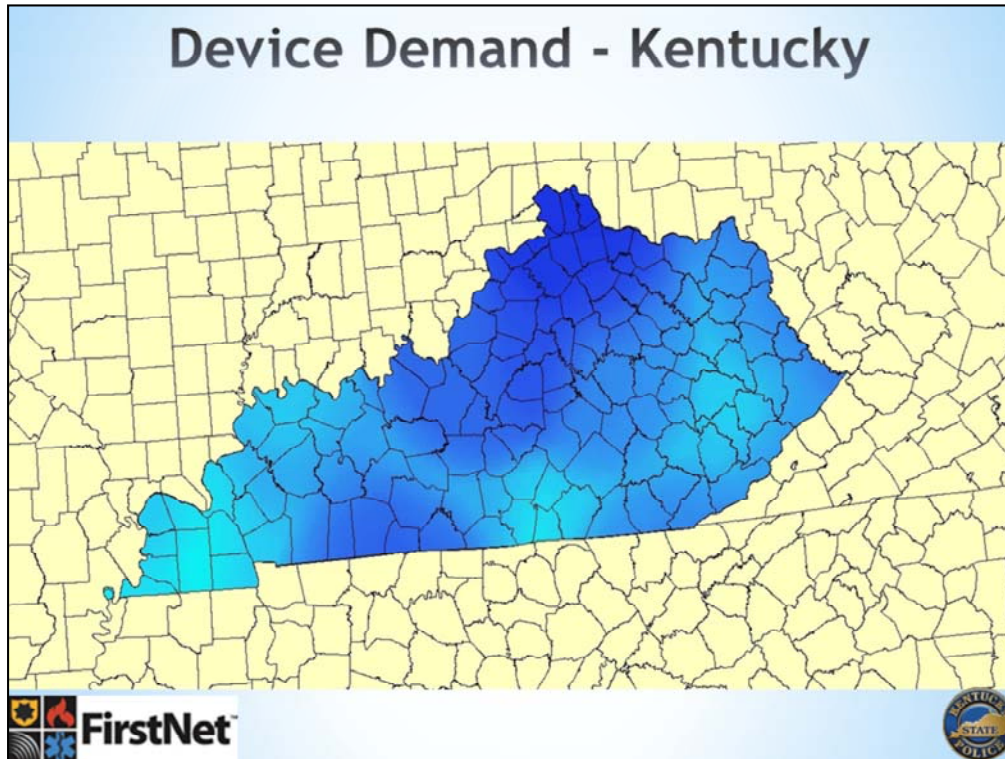




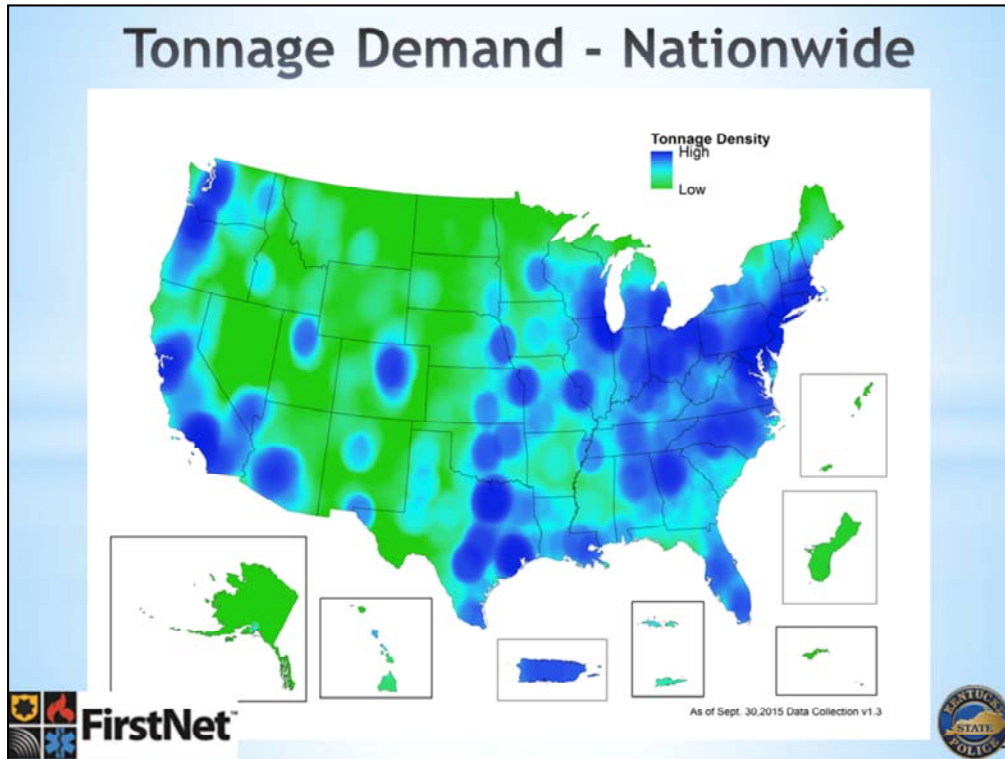
Slide 9: User demand or user density for the Commonwealth. Map based on input from states, territories, tribal nations, and federal agencies, with FirstNet estimates.



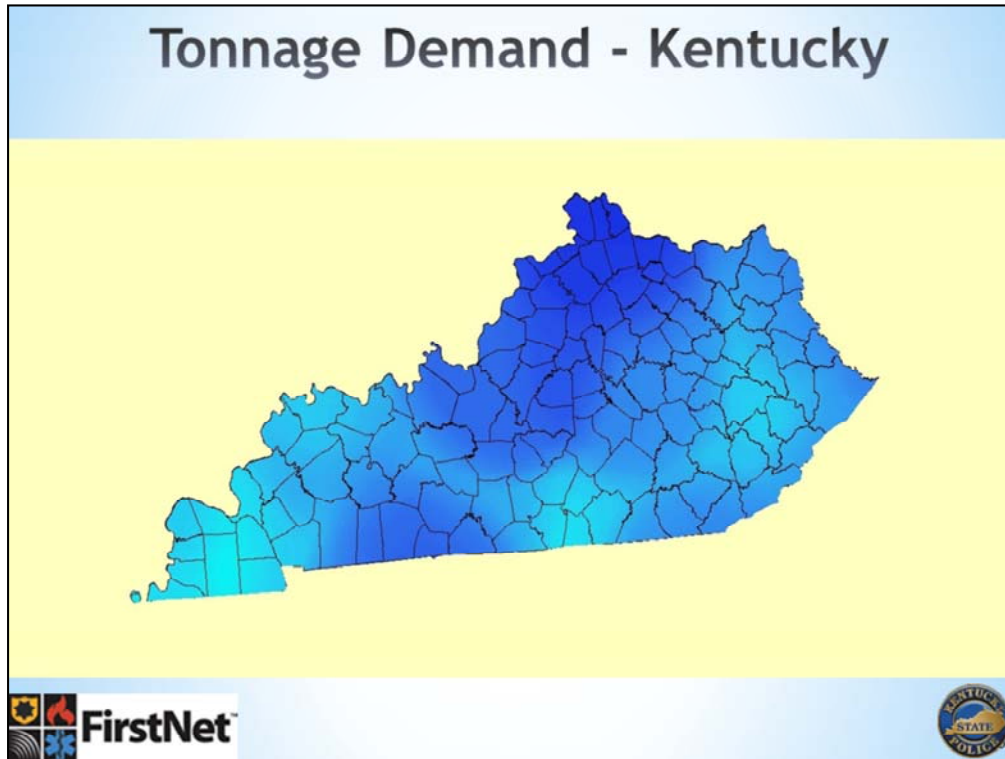
Slide 10: Nationwide view of device demand or device density. Map based on input from states, territories, tribal nations, and federal agencies, with FirstNet estimates.



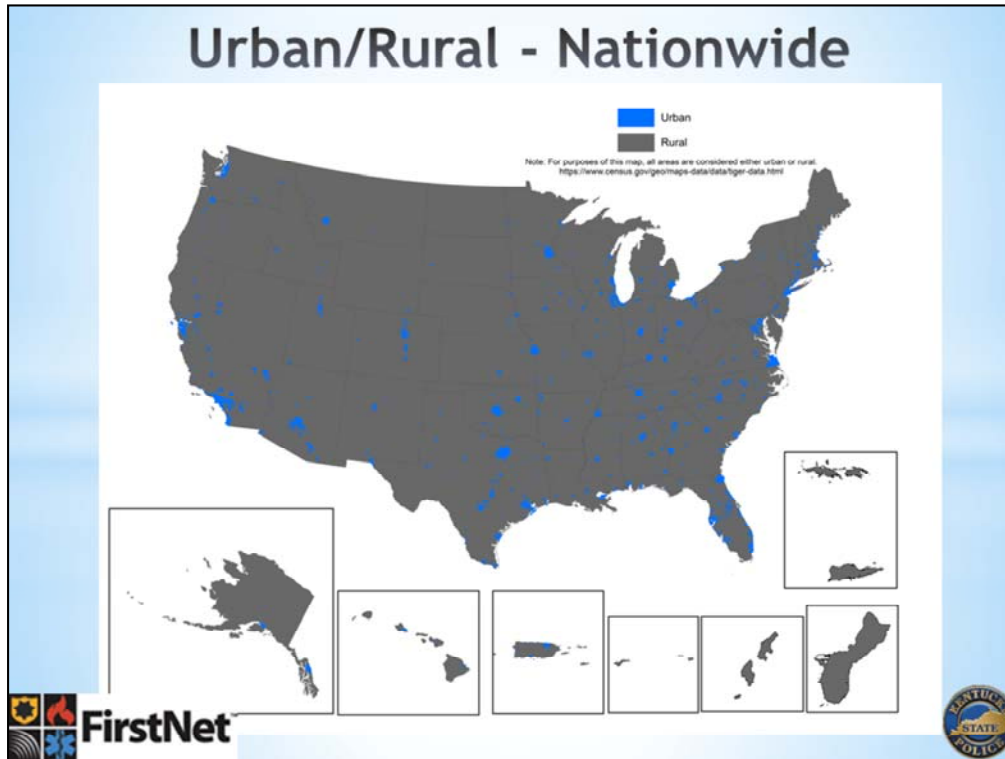
Slide 11: Device demand or device density for the Commonwealth. Map based on input from states, territories, tribal nations, and federal agencies, with FirstNet estimates.



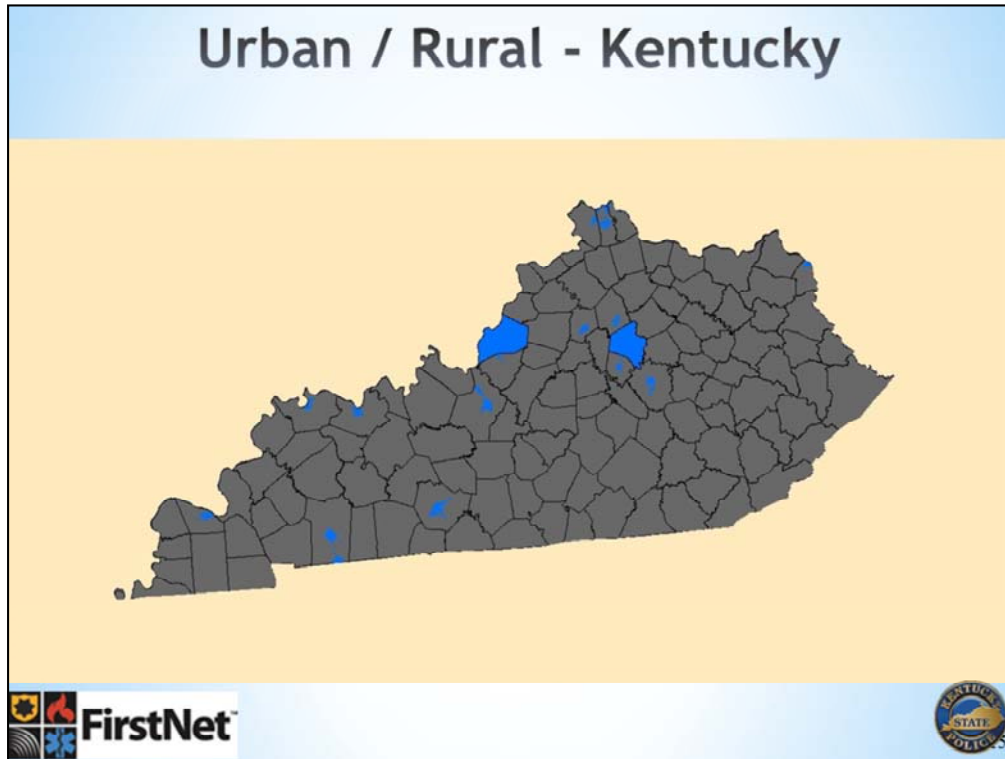
Slide 12: Nationwide view of tonnage or “**data demand**”. Map based on input from states, territories, tribal nations, and federal agencies, with FirstNet estimates.



Slide 13: Tonnage or “data demand” for the Commonwealth. Map based on input from states, territories, tribal nations, and federal agencies, with FirstNet estimates.



Slide 14: Nationwide view of the areas classified as either **urban** or **rural**, from the FirstNet Authority. Definition based on the Rural Electrification Act of 1936.



Slide 15: This is a view of the Commonwealth's areas classified as either urban or rural per the FirstNet definition.

# FirstNet RFP and State Plan Timeline\*

